



2024 annual report to the Community

# Wandana Primary School and Wandana Preschool

Wandana Primary School number: 994

Wandana Preschool number: 1621

Partnership: Torrens



School principal:

Robyn McLachlan

Signature

Date of endorsement:

18/06/2025



## Context Statement

Wandana Primary School caters for students from R-6. At the time of this report, the enrolment in 2024 is 168. Wandana Primary School is classified as Category 2 on the Department for Education Index of Educational Disadvantage. At the time of this report, the school population includes 18% Aboriginal students, 21% students with disabilities, 15% students with English as an additional language or dialect (EALD) funded background, 2% children/young people in care. Further information about the school is available on the school's website (including its context statement), as well as the My School website.

Information about Wandana Preschool is available on the centres website, as well as the Australian Childrens Education and Care Quality Authority (ACECQA) website.

Data Source: Department for Education data holdings from Mid census captured in AUGUST 2024.

## Governing Council Report

The Governing Council has had a fantastic year supporting the work of the school and helping create opportunities for students and families to connect.

This year we held a number of successful community events and fundraisers including the school disco, cake stall, Mother's and Father's Day stalls, and the always popular Colour Fun Run. These events are not only lots of fun for the students, but they also raise valuable funds that go straight back into improving our school.

One of the major projects supported by the Governing Council this year was the school yard upgrade, helping to make outdoor spaces more enjoyable, engaging and safe for our students.

We'd like to thank the staff, volunteers and families who support these events – they wouldn't be possible without your time and generosity. We're proud of what's been achieved this year and look forward to continuing our work in 2026.

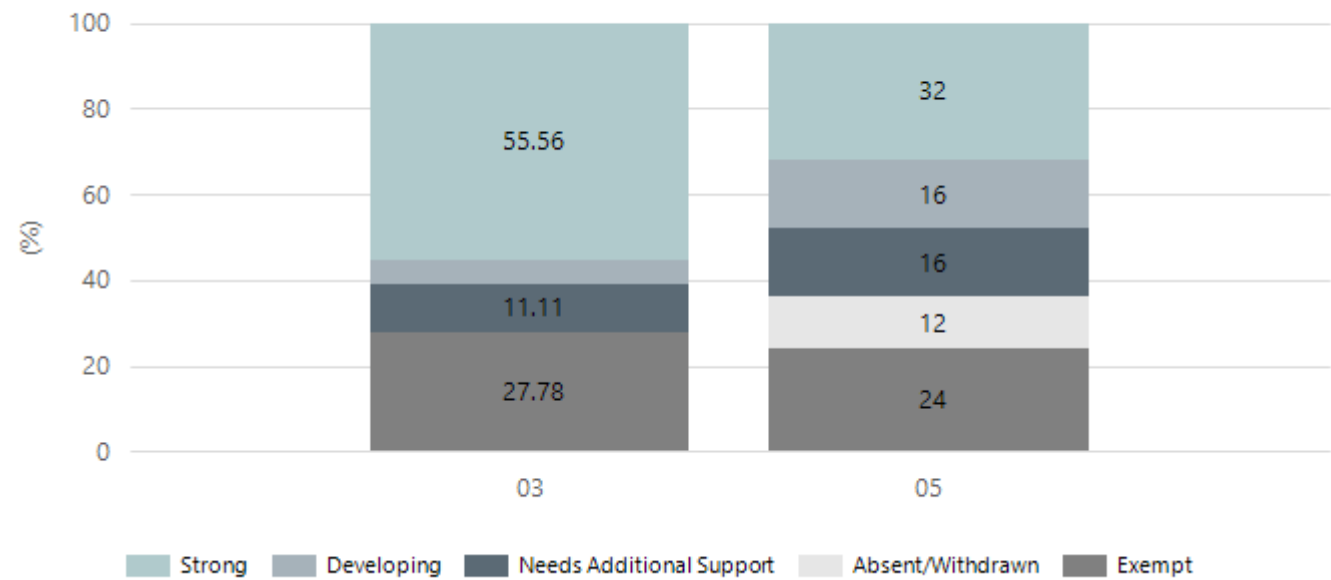
— *Governing Council Chairperson*

## Performance Summary

### NAPLAN Proficiency

In 2023 the Australian Curriculum, Assessment and Reporting Authority (ACARA) - a Commonwealth Independent statutory authority - announced changes to NAPLAN performance reporting. The new approach replaces the previous numerical NAPLAN bands and the national minimum standard.

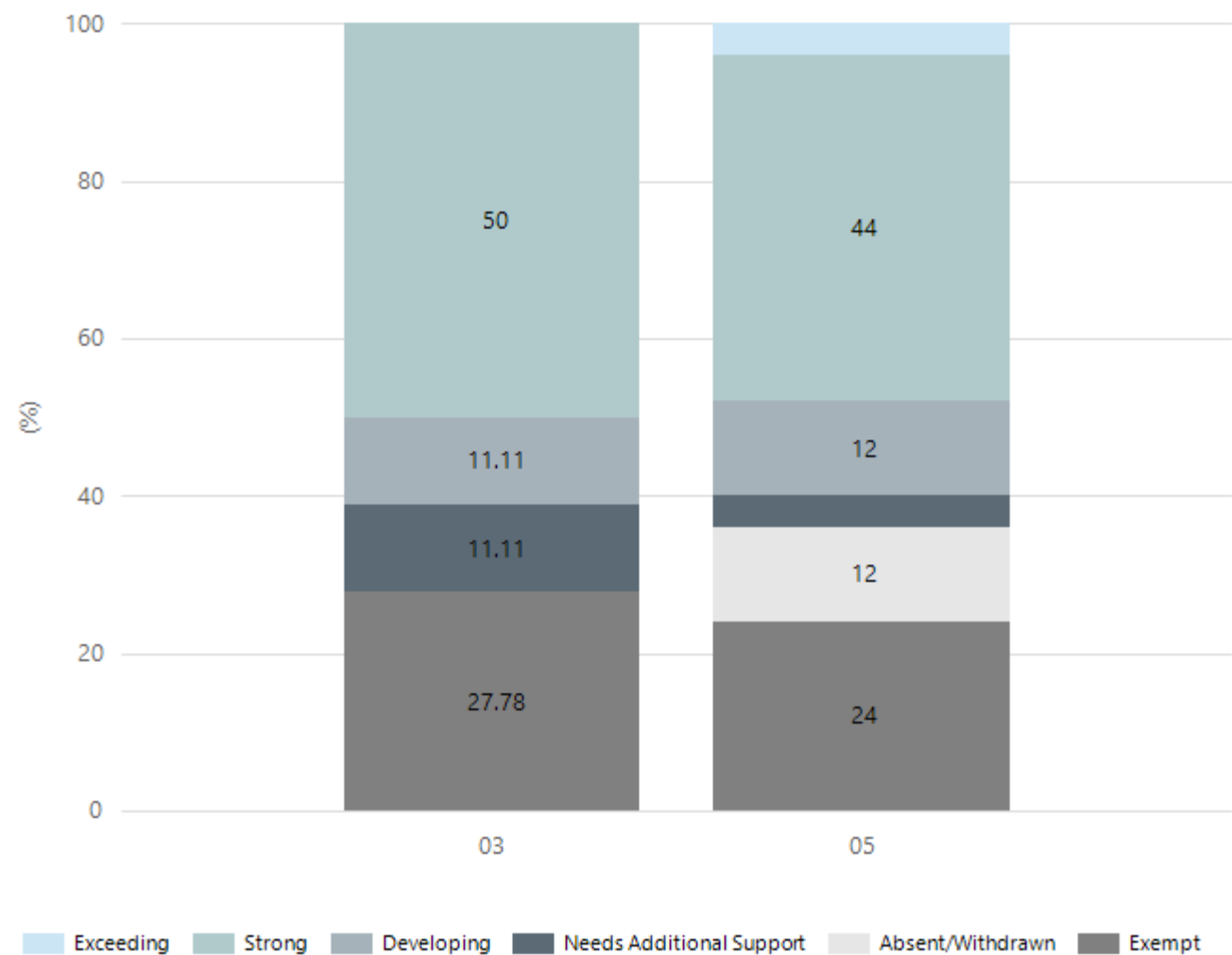
Numeracy



Year Level	03	05
Strong	10	8
Developing	1	4
Needs Additional Support	2	4
Absent/Withdrawn		3
Exempt	5	6
Total	18	25

Data Source: Department for Education Assessment Data Holdings, 2024. If there are less than 6 students who sat NAPLAN in a school, no information will be shown. If a year level has less than 6 students, that year level will not be shown in NAPLAN results.

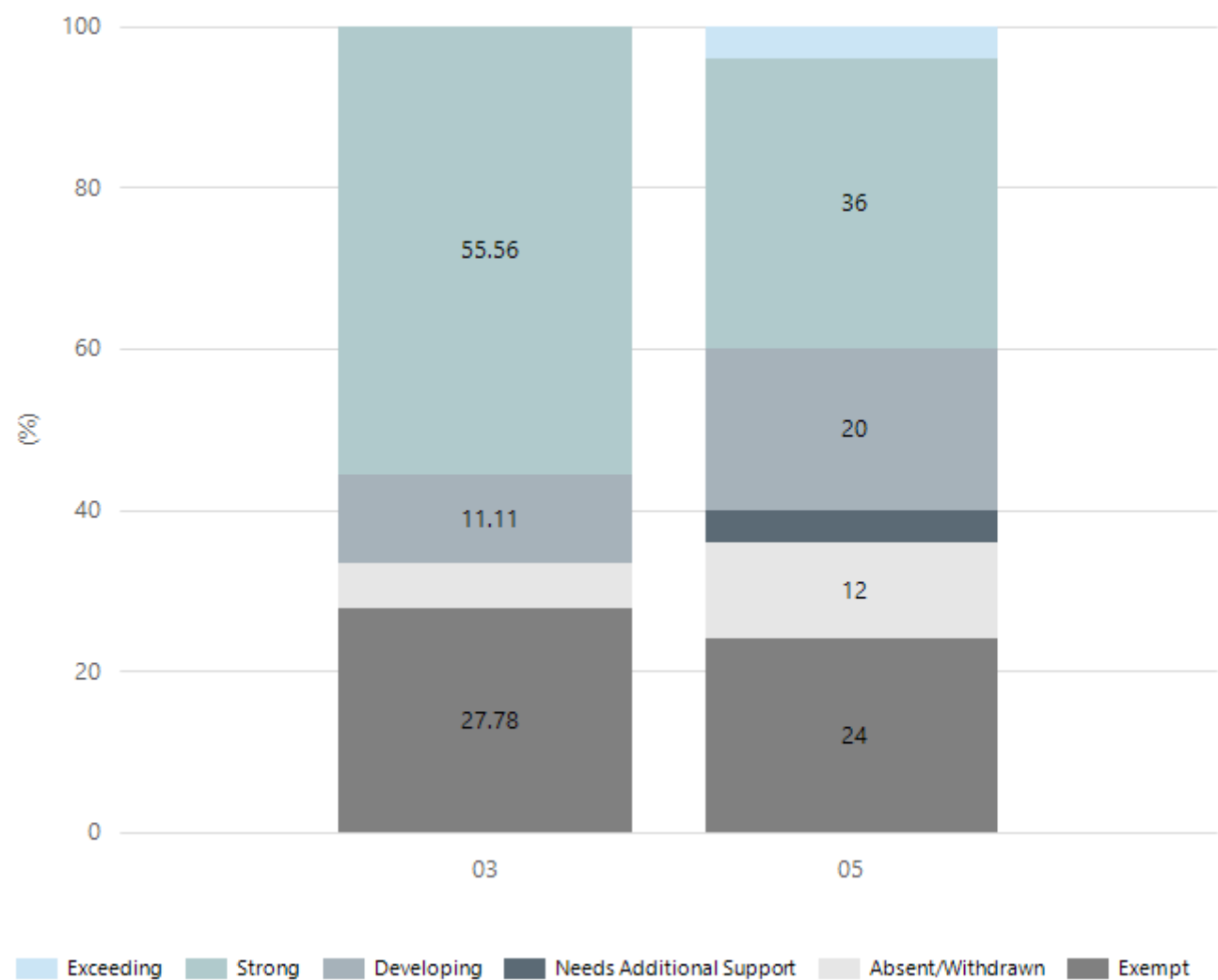
# Reading



Year Level	03	05
Exceeding		1
Strong	9	11
Developing	2	3
Needs Additional Support	2	1
Absent/Withdrawn		3
Exempt	5	6
Total	18	25

Data Source: Department for Education Assessment Data Holdings, 2024. If there are less than 6 students who sat NAPLAN in a school, no information will be shown. If a year level has less than 6 students, that year level will not be shown in NAPLAN results.

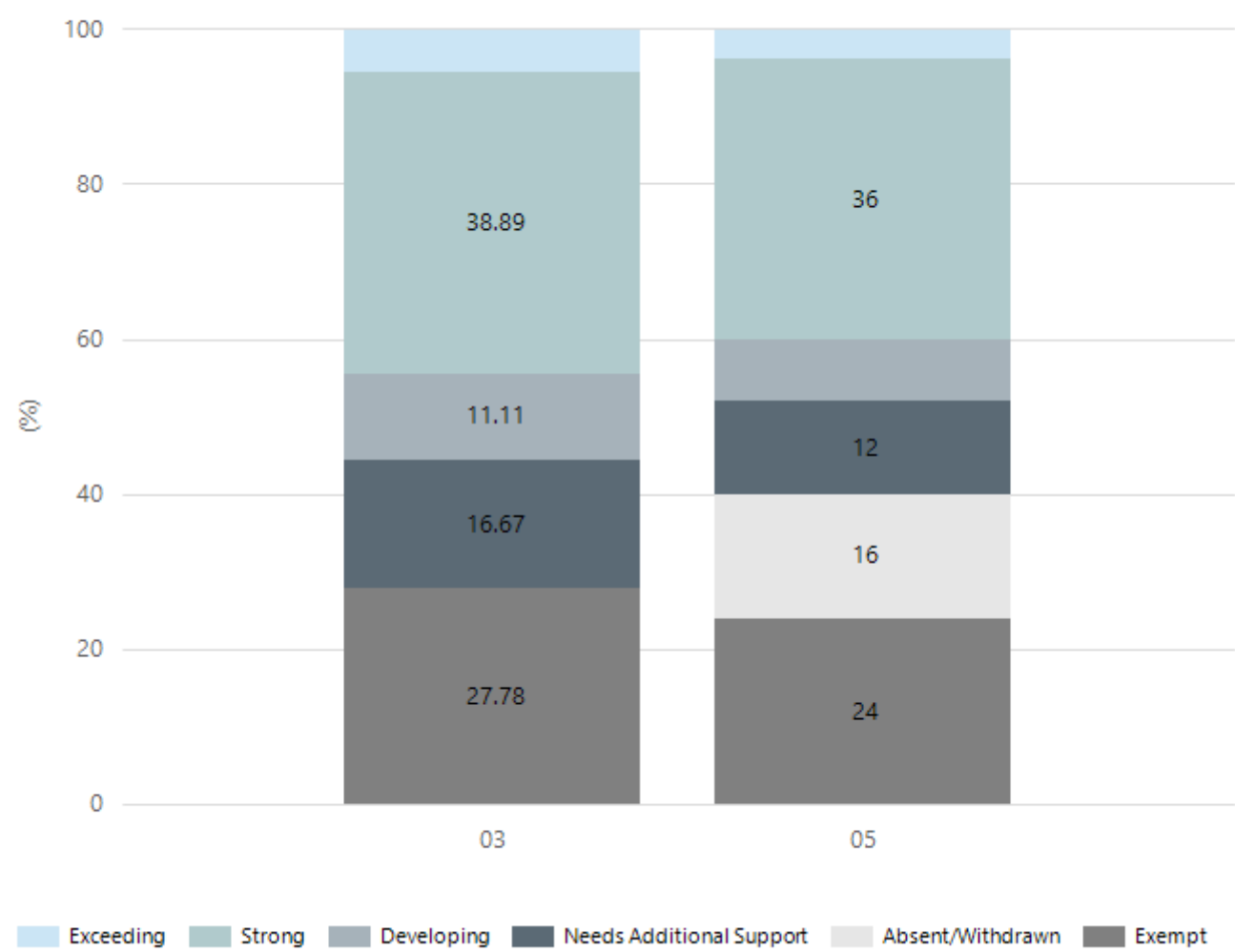
Writing



Year Level	03	05
Exceeding		1
Strong	10	9
Developing	2	5
Needs Additional Support		1
Absent/Withdrawn	1	3
Exempt	5	6
Total	18	25

Data Source: Department for Education Assessment Data Holdings, 2024. If there are less than 6 students who sat NAPLAN in a school, no information will be shown. If a year level has less than 6 students, that year level will not be shown in NAPLAN results.

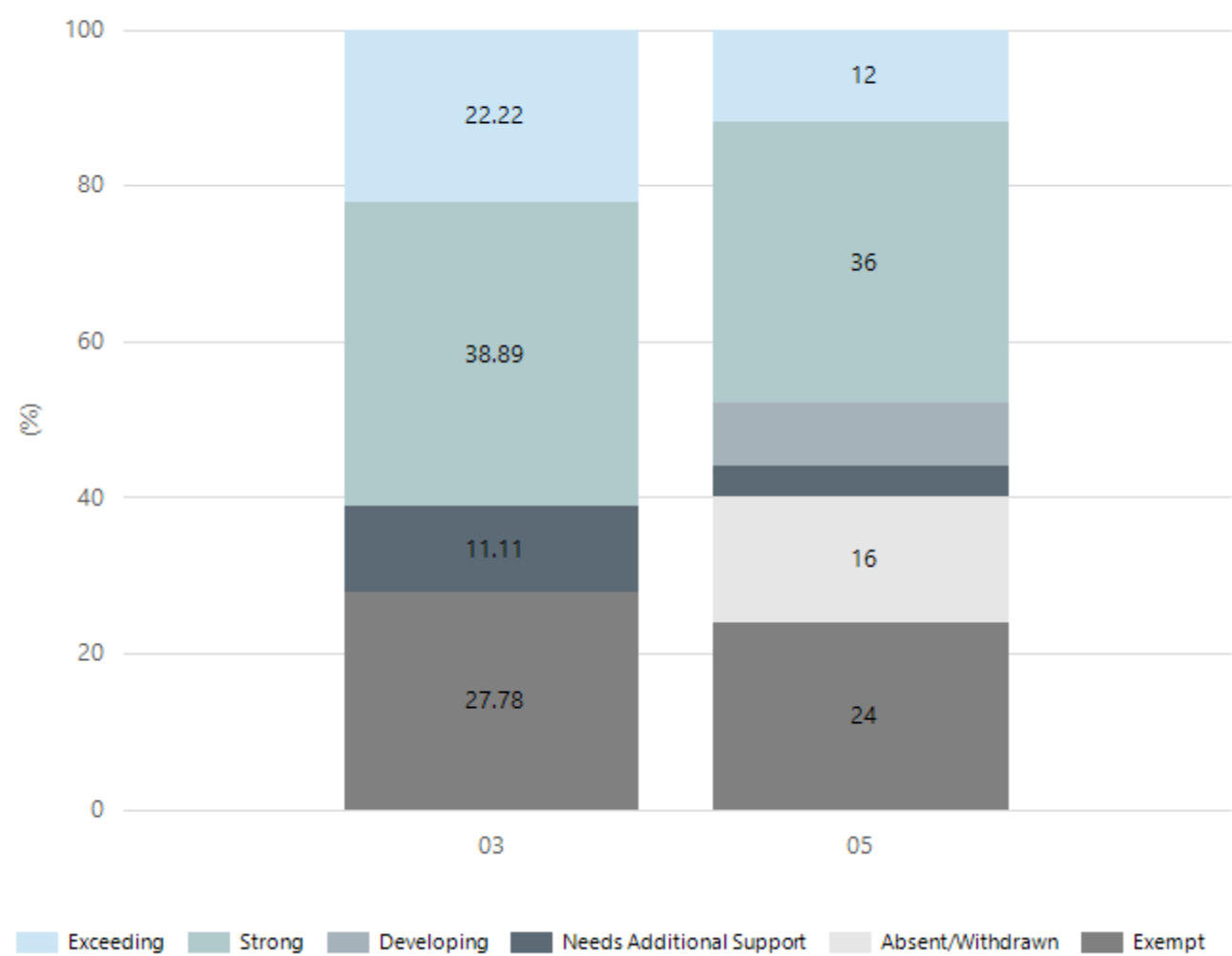
Grammar



Year Level	03	05
Exceeding	1	1
Strong	7	9
Developing	2	2
Needs Additional Support	3	3
Absent/Withdrawn		4
Exempt	5	6
Total	18	25

Data Source: Department for Education Assessment Data Holdings, 2024. If there are less than 6 students who sat NAPLAN in a school, no information will be shown. If a year level has less than 6 students, that year level will not be shown in NAPLAN results.

Spelling

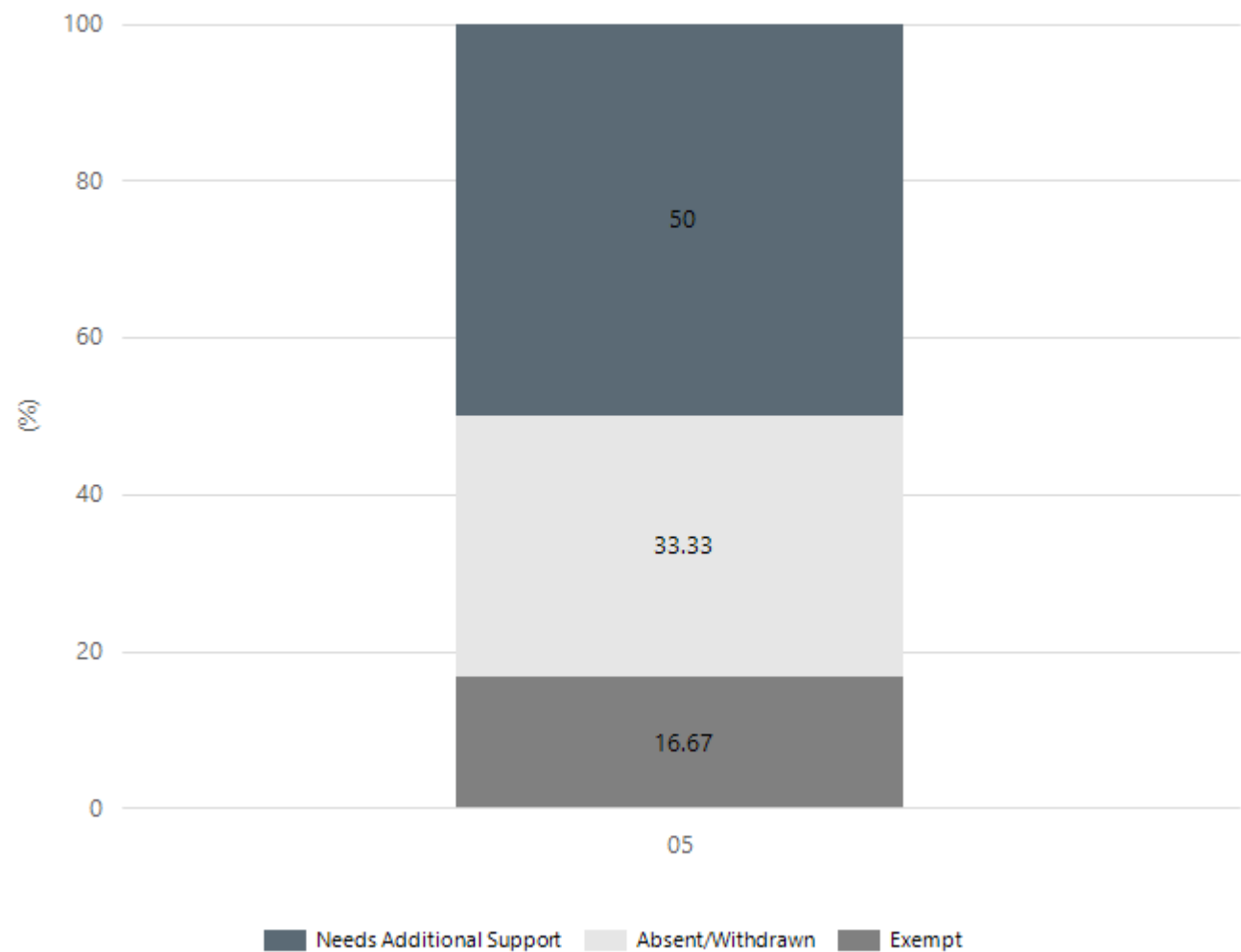


Year Level	03	05
Exceeding	4	3
Strong	7	9
Developing		2
Needs Additional Support	2	1
Absent/Withdrawn		4
Exempt	5	6
Total	18	25

Data Source: Department for Education Assessment Data Holdings, 2024. If there are less than 6 students who sat NAPLAN in a school, no information will be shown. If a year level has less than 6 students, that year level will not be shown in NAPLAN results.

# NAPLAN Proficiency - Aboriginal Learners

## Numeracy

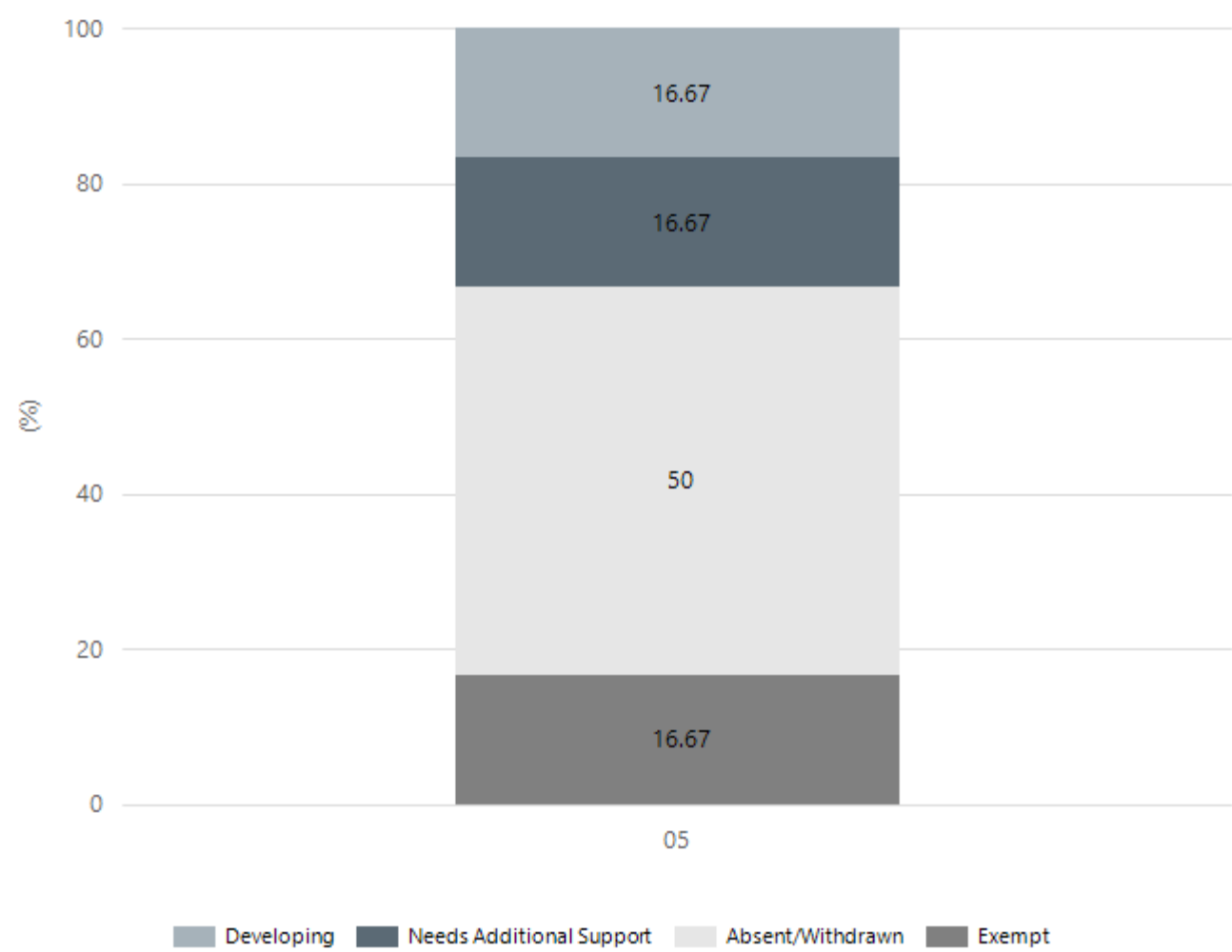


Year Level	05
Needs Additional Support	3
Absent/Withdrawn	2
Exempt	1
Total	6

Data Source: Department for Education Assessment Data Holdings, 2024. If there are less than 6 students who sat NAPLAN in a school, no information will be shown. If a year level has less than 6 students, that year level will not be shown in NAPLAN results. Only data for Aboriginal learners is displayed.



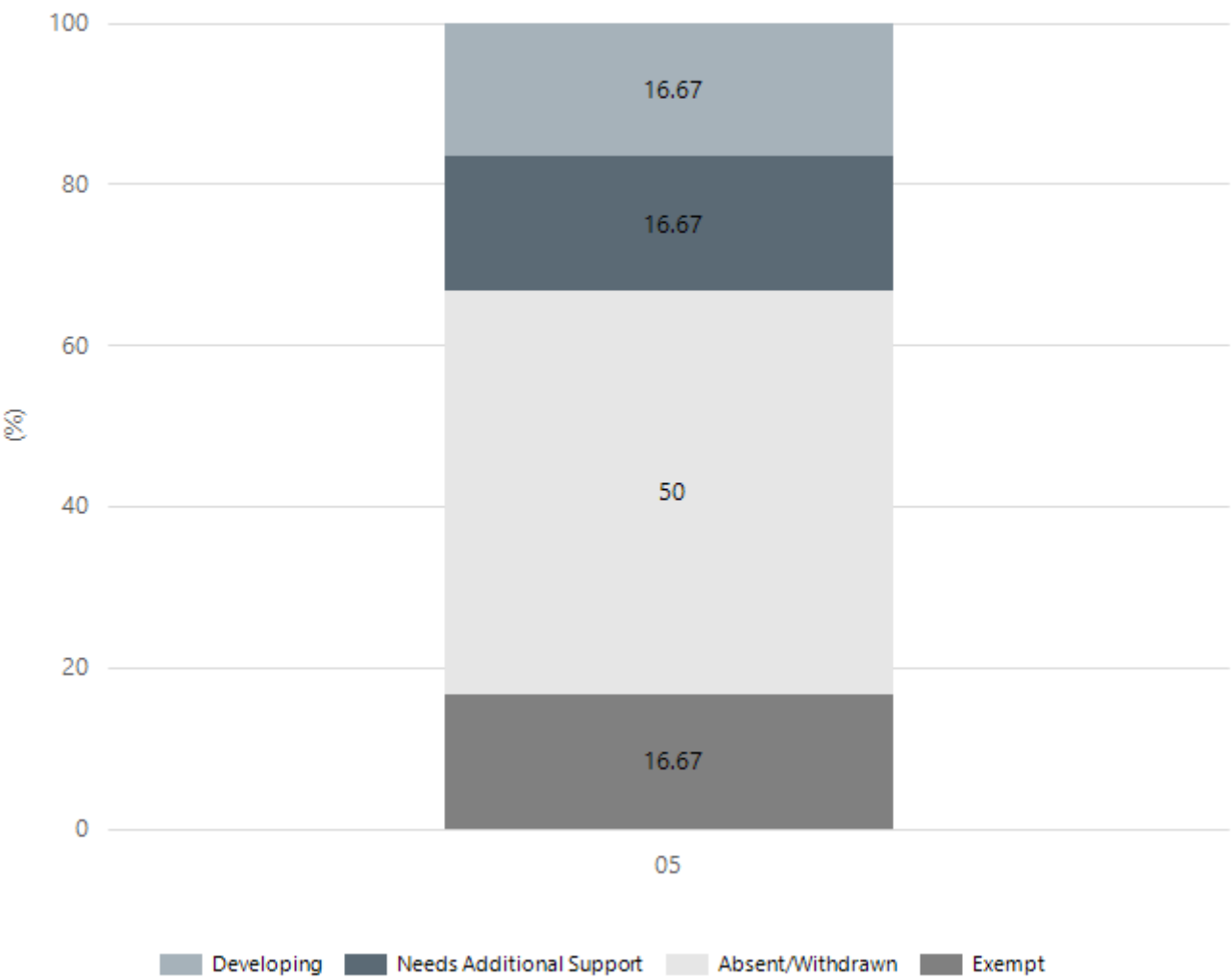
Reading



Year Level	05
Developing	1
Needs Additional Support	1
Absent/Withdrawn	3
Exempt	1
Total	6

Data Source: Department for Education Assessment Data Holdings, 2024. If there are less than 6 students who sat NAPLAN in a school, no information will be shown. If a year level has less than 6 students, that year level will not be shown in NAPLAN results. Only data for Aboriginal learners is displayed.

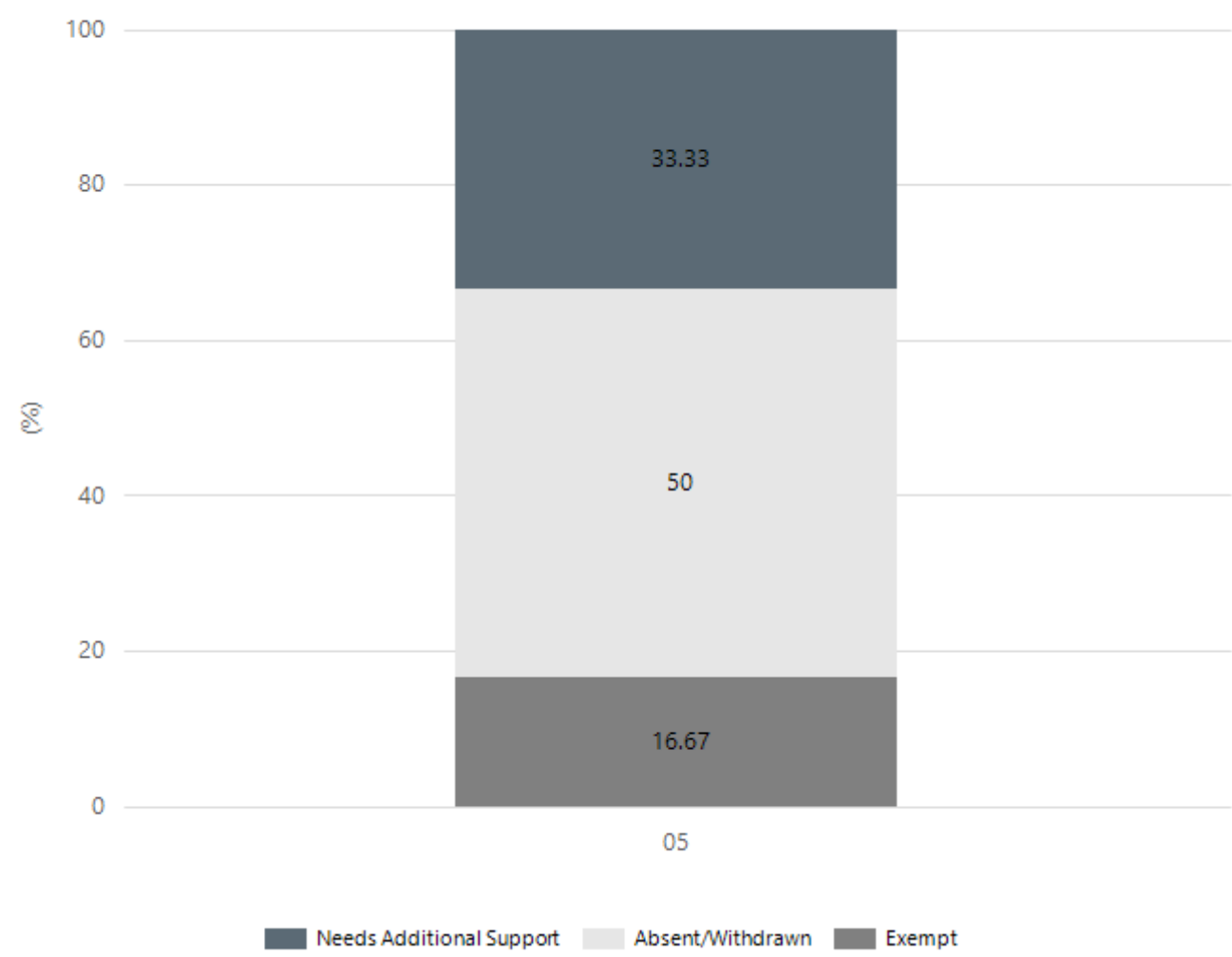
Writing



Year Level	05
Developing	1
Needs Additional Support	1
Absent/Withdrawn	3
Exempt	1
Total	6

Data Source: Department for Education Assessment Data Holdings, 2024. If there are less than 6 students who sat NAPLAN in a school, no information will be shown. If a year level has less than 6 students, that year level will not be shown in NAPLAN results. Only data for Aboriginal learners is displayed.

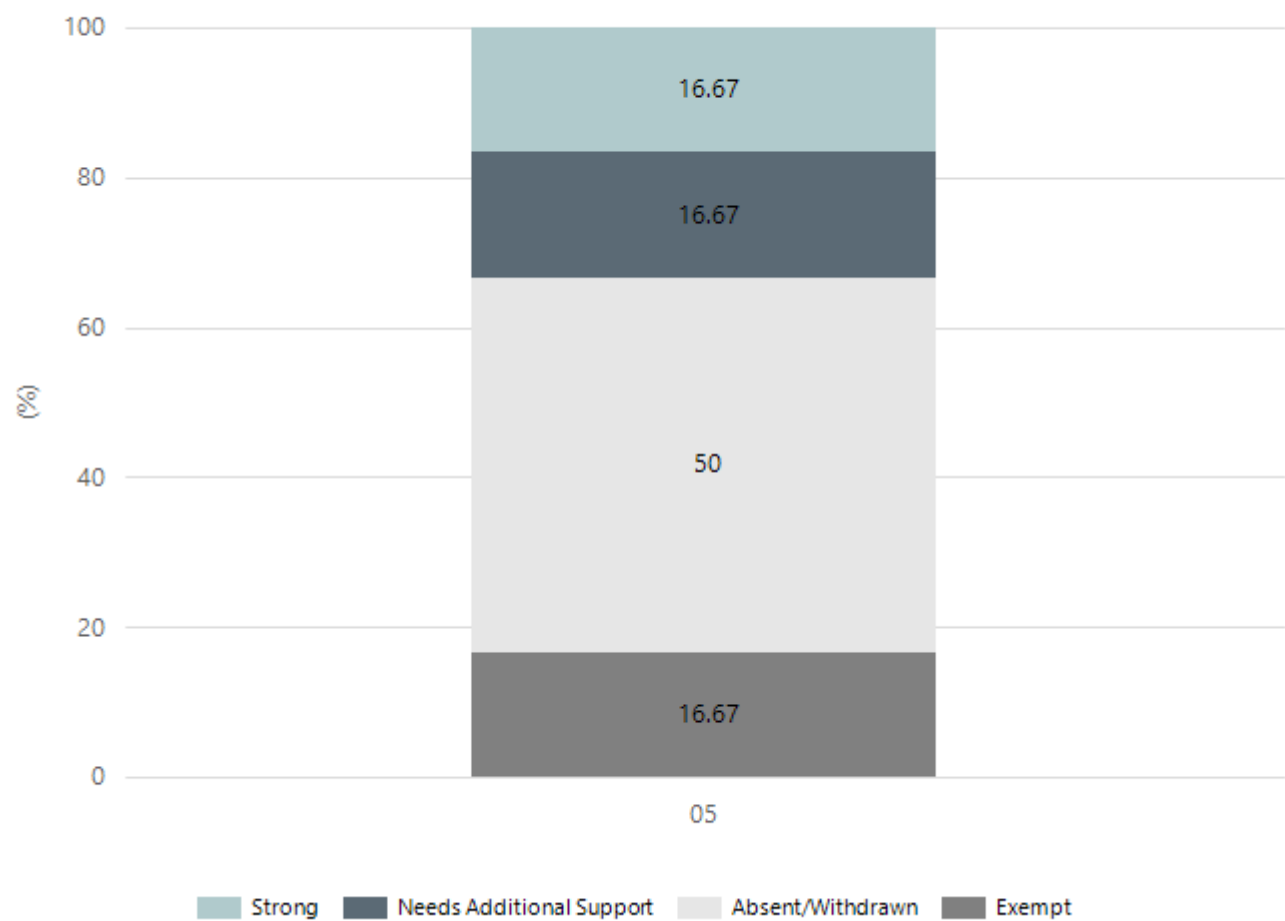
Grammar



Year Level	05
Needs Additional Support	2
Absent/Withdrawn	3
Exempt	1
Total	6

Data Source: Department for Education Assessment Data Holdings, 2024. If there are less than 6 students who sat NAPLAN in a school, no information will be shown. If a year level has less than 6 students, that year level will not be shown in NAPLAN results. Only data for Aboriginal learners is displayed.

Spelling



Year Level	05
Strong	1
Needs Additional Support	1
Absent/Withdrawn	3
Exempt	1
Total	6

Data Source: Department for Education Assessment Data Holdings, 2024. If there are less than 6 students who sat NAPLAN in a school, no information will be shown. If a year level has less than 6 students, that year level will not be shown in NAPLAN results. Only data for Aboriginal learners is displayed.

# Preschool Attendance

	Term 1	Term 2	Term 3	Term 4
2021 centre	81.3%	72%	88.2%	81.3%
2022 centre	81%	73.8%	71.1%	73.7%
2023 centre	66%	75.7%	79.4%	83.9%
2024 centre	80.3%		78.5%	

Based on attendances recorded in the two-week reference period each term. Data for eligible enrolments as described in the department's Enrolment policy. Attendance rates may differ to previous reporting with the transfer from calculations based on deemed attendance to actual attendance using booked hours divided by attended hours. Data Source: Department for Education Attendance Data, Semester 1 Report 2024. A blank cell indicates there we no students enrolled.

# School Attendance

Year Level	2022	2023	2024
Reception	72.8%	78.3%	85.8%
Year 01	77.7%	80.4%	78.2%
Year 02	78.0%	73.9%	84.5%
Year 03	80.2%	75.1%	91.3%
Year 04	84.2%	79.9%	84.7%
Year 05	75.8%	79.0%	81.2%
Year 06	60.9%	71.2%	91.0%
Primary Other	81.5%	82.7%	86.7%
Total	76.4%	77.7%	84.7%

Data Source: Department for Education Attendance Data, Semester 1 Report 2024. A blank cell indicates there we no students enrolled. 'Primary Other' includes students enrolled in specialised education options. 'Secondary Other' includes students who have already spent a year at Year 12 and elected to undertake further study at Year 12.

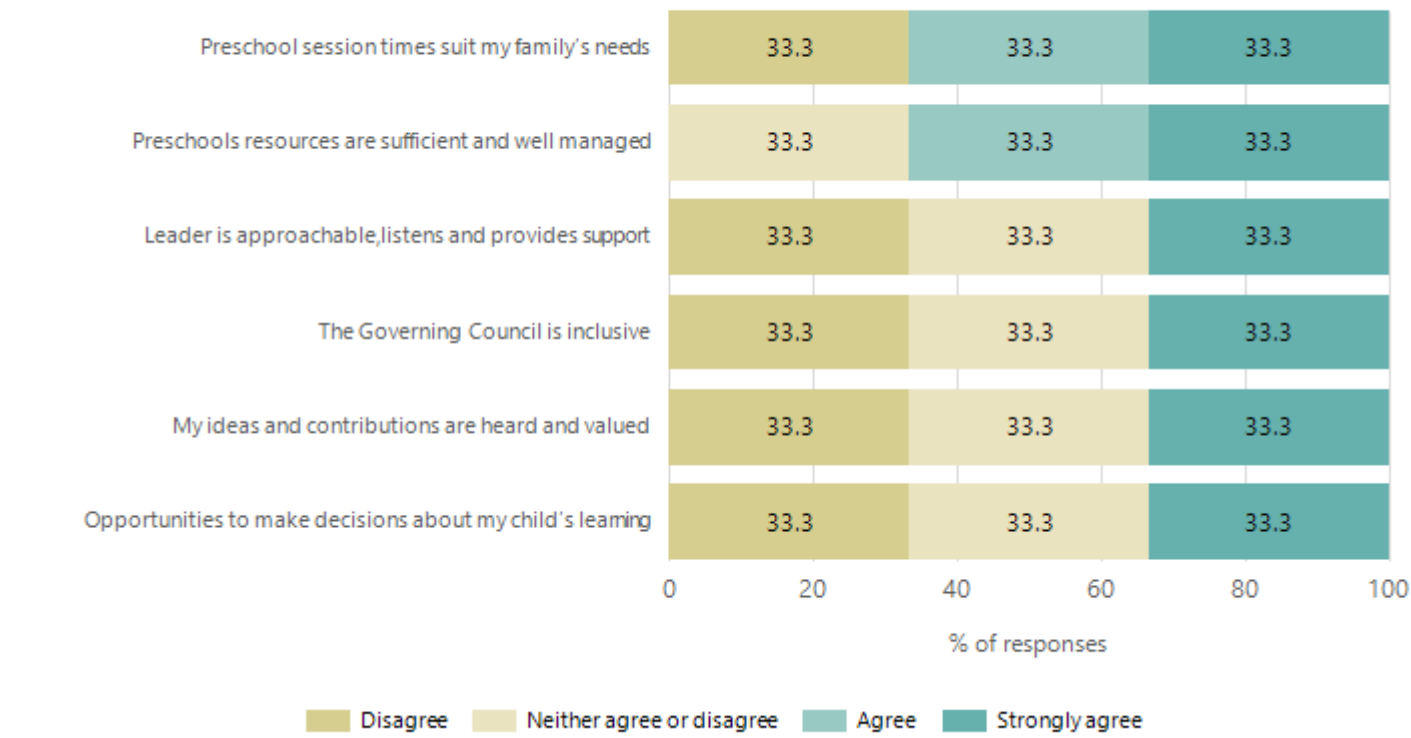
# Attendance Comment

In South Australia, preschool attendance is not compulsory, but it is strongly encouraged. Preschool gives children the best opportunity to develop skills, which prepare them for school. These benefits include establishing positive routines and habits, friendships and connections as well as developing communication, problem-solving and creative skills. All children are entitled to access a preschool program over 4 terms the year before they start school.

In South Australia, all children and young people must be in school from 6 years to 16 years old. They must attend a government or non-government school full time. From age 16 to 17 however, young people must attend school or an approved learning program (such as an apprenticeship, traineeship, accredited course or university). Schools and parents must encourage and support students to come to school every day. Parents and caregivers must make sure their child is enrolled in a school, and attends school all day and everyday it is open, unless a child is sick or has an approved exemption. Teachers and leaders actively follow up when a student misses school, including recording all absences and non-attendance. All schools in South Australia have local attendance procedures governed under the Education and Children's Services Regulations 2020.

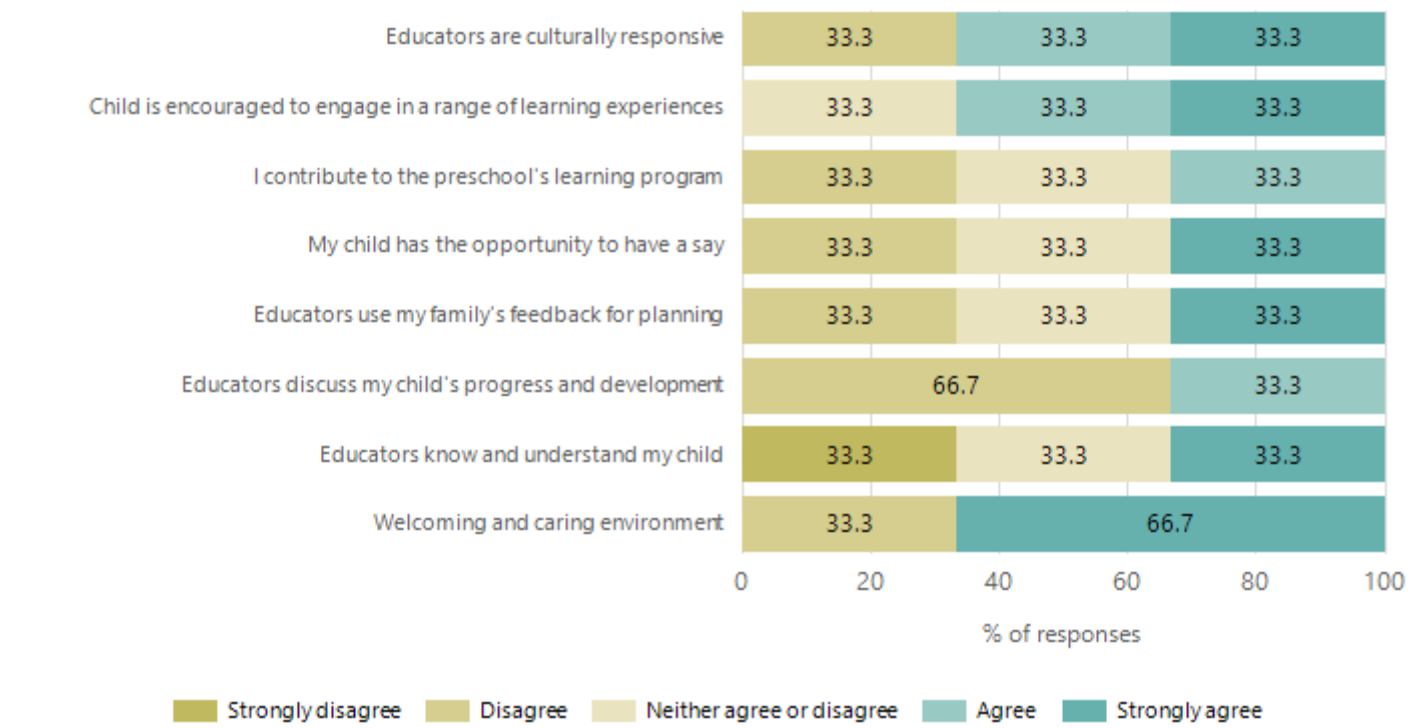
# Preschool Family Opinion Survey

## Governance, Leadership and Management



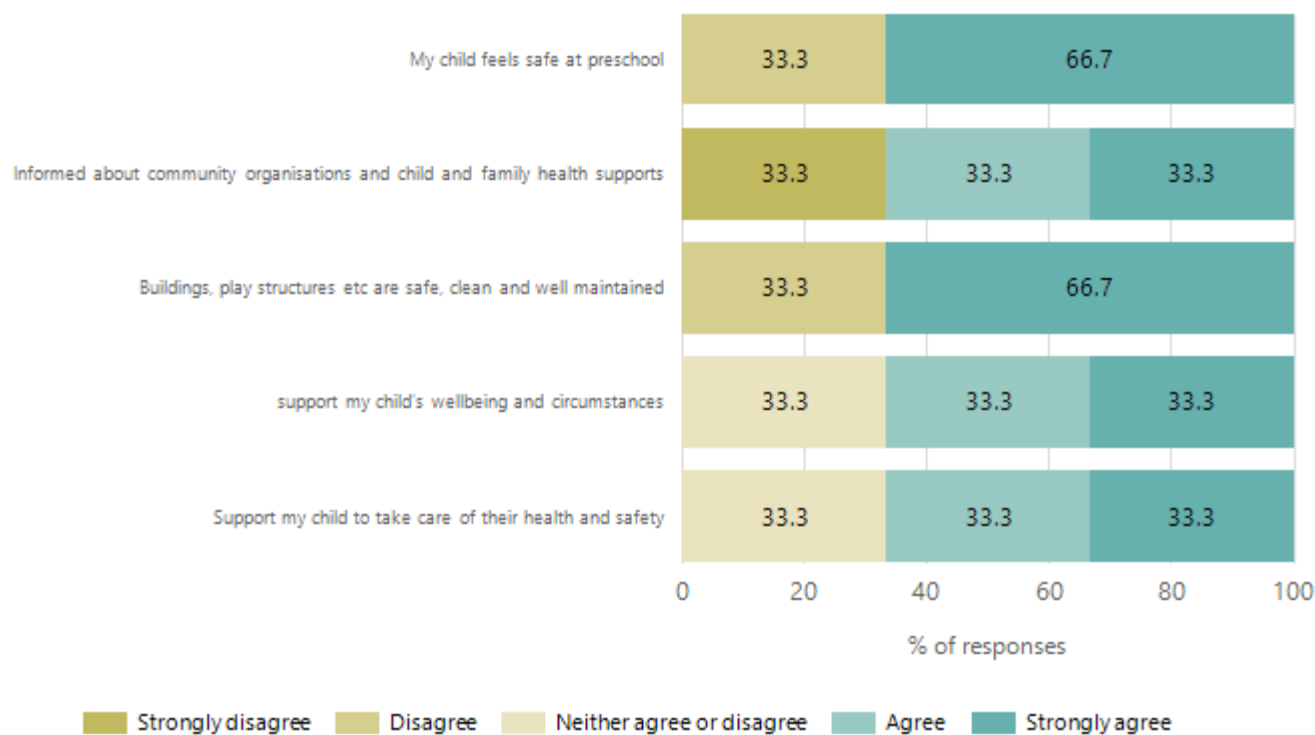
Data Source: 2024 Department for Education Preschool Family Opinions Survey, Term 3 2024.

## Quality of Teaching and Learning



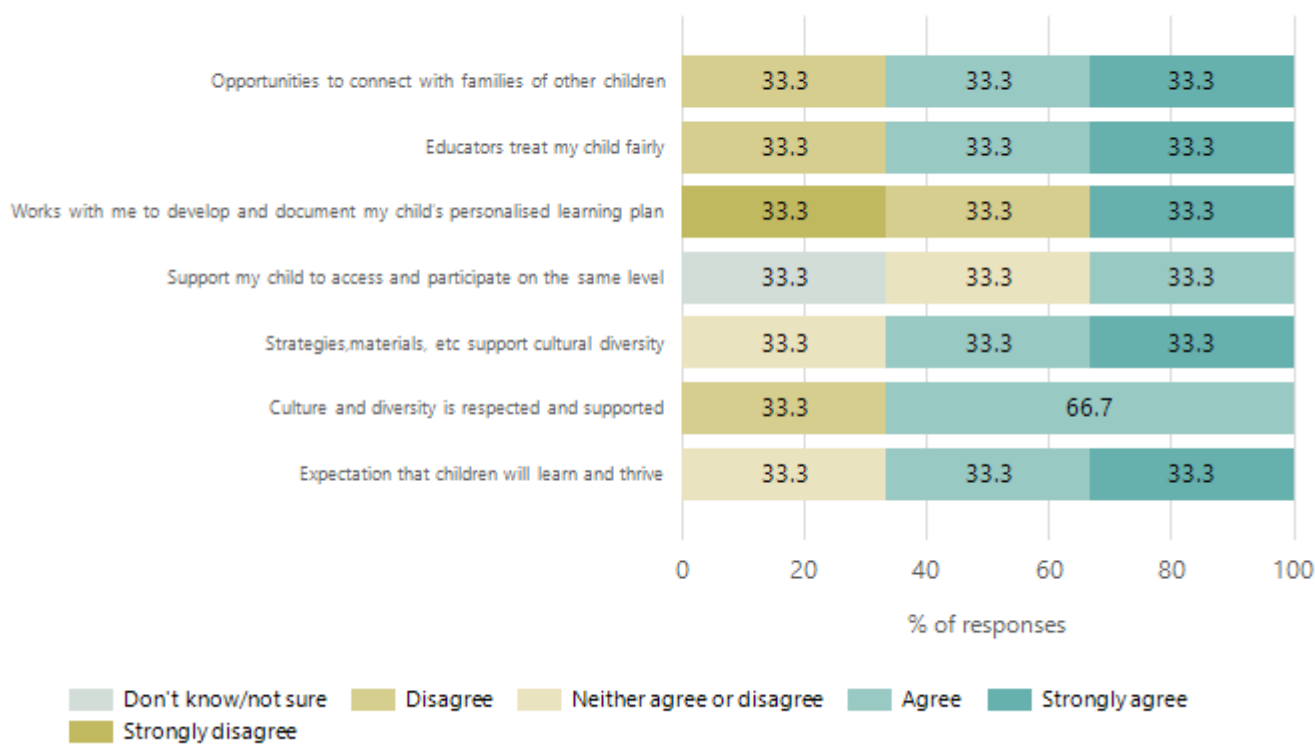
Data Source: 2024 Department for Education Preschool Family Opinions Survey, Term 3 2024.

## Safety, Health and Wellbeing



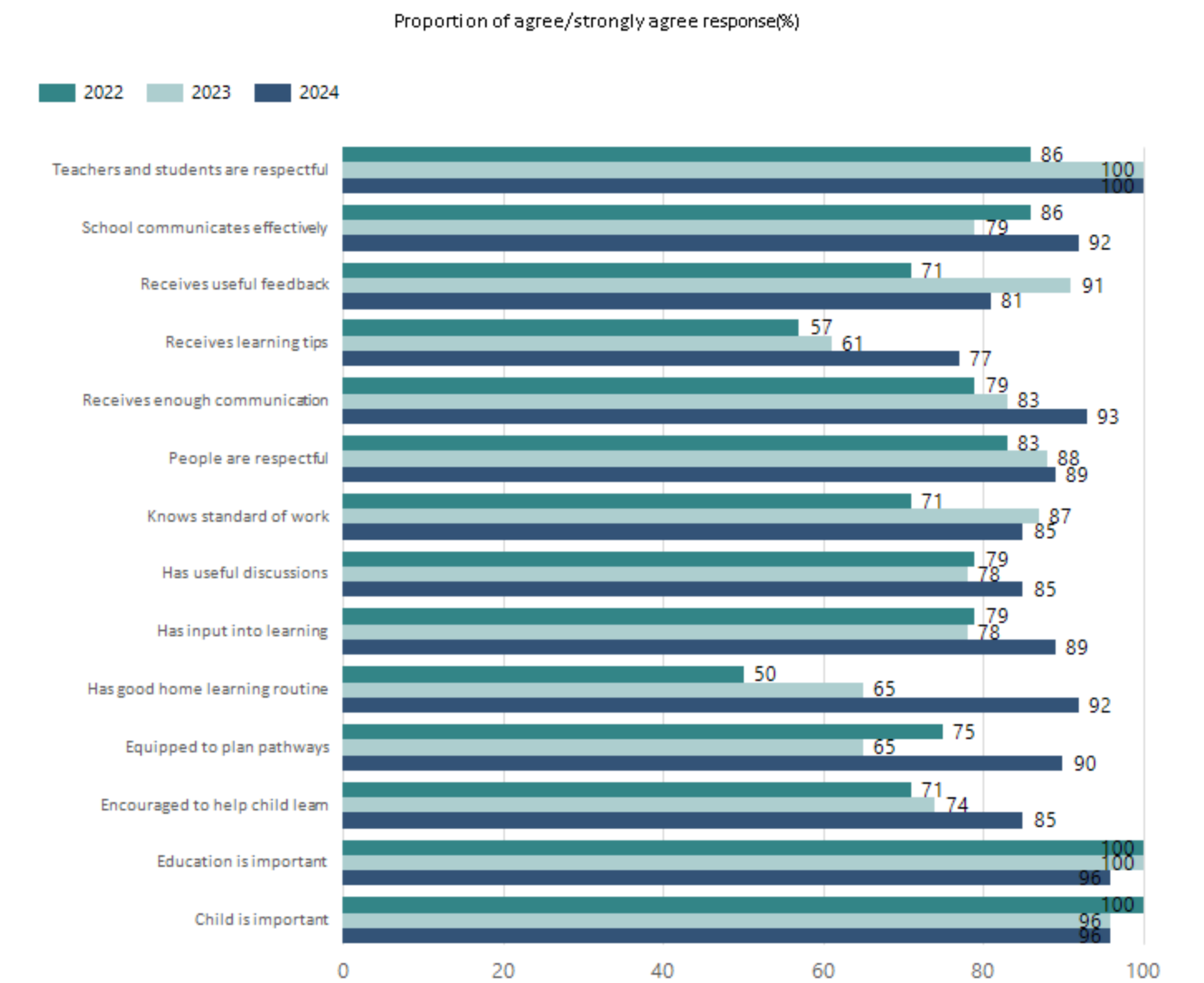
Data Source: 2024 Department for Education Preschool Family Opinions Survey, Term 3 2024.

## Support and Inclusion



Data Source: 2024 Department for Education Preschool Family Opinions Survey, Term 3 2024.

# School Parent Opinion Survey Results



Data Source: 2024 Department for Education Parent Opinions Survey, Term 3 2024.



# Destination Schools

Feeder Schools (Site number - Name)	2022	2023	2024
0982 - Dernancourt School	5.4%		
0994 - Wandana Primary School	46.0%	46.2%	54.6%
8364 - St Paul's College		3.9%	
9043 - Pinnacle College	10.8%	17.3%	9.1%
9441 - Pinnacle College - Golden Grove Campus	5.4%	3.9%	
9999 - Unknown	27.0%	21.2%	27.3%

Note: The data is collected in term 3. It does not reflect actual schools enrolled in by existing preschool children. A blank cell indicates there was no data for students enrolled.

Data Source: Department for Education Destination Data Report, 2024.

# Intended Destination

Leave Reason	Number	%
NG - ATTENDING NON-GOV SCHOOL IN SA	2	11.0%
OV - LEFT SA FOR OVERSEAS	1	5.0%
TG - TRANSFERRED TO SA GOVERNMENT SCHOOL	11	58.0%
U - UNKNOWN	2	11.0%
VI - LEFT SA FOR VIC	1	5.0%
WA - LEFT SA FOR WA	2	11.0%

Data Source: Department for Education Destination Data Report, 2024. Data extract term 3 2024. Data shows recorded destinations for students that left the school in the previous year. Data is uploaded by schools in term 3 and may not reflect final or total figures at time of report creation.

# Highest Qualifications held by the teaching workforce and workforce composition

All teachers at this school are qualified and registered with the SA Teachers Registration Board.

Qualification Level	Number of Qualifications
Bachelor's degrees or Diplomas	16
Postgraduate Qualifications	5

Data Source: Data extracted from Mandatory Workforce Information Collections as on the last pay date of June 2024. As self-reported by staff in the system.

Please note: Data includes staff who are Actively employed and on extended paid leave. Please note only the highest qualification of the Teaching staff is reported. Excludes any number of other certifications earned.

## Workforce composition including indigenous staff

	Teaching Staff		Non-Teaching Staff	
	Indigenous	Non-Indigenous	Indigenous	Non-Indigenous
Full-Time Equivalents	0.0	18.5	0.8	11.3
Persons	0.0	21.0	1.0	18.0

Data Source: Data extracted from Mandatory Workforce Information Collection as on the last pay date of June 2024.

Please note: Data includes staff who are actively employed and on extended paid leave. "Indigenous category" is self-reported by staff in the system.

# Financial Statement

Funding Source	Amount
Grants: State	435887.93
Grants: Commonwealth	
Parent Contributions	15,005 school 8132 Preschool
Fund Raising	7840
Other	4247

Data Source: School supplied data.